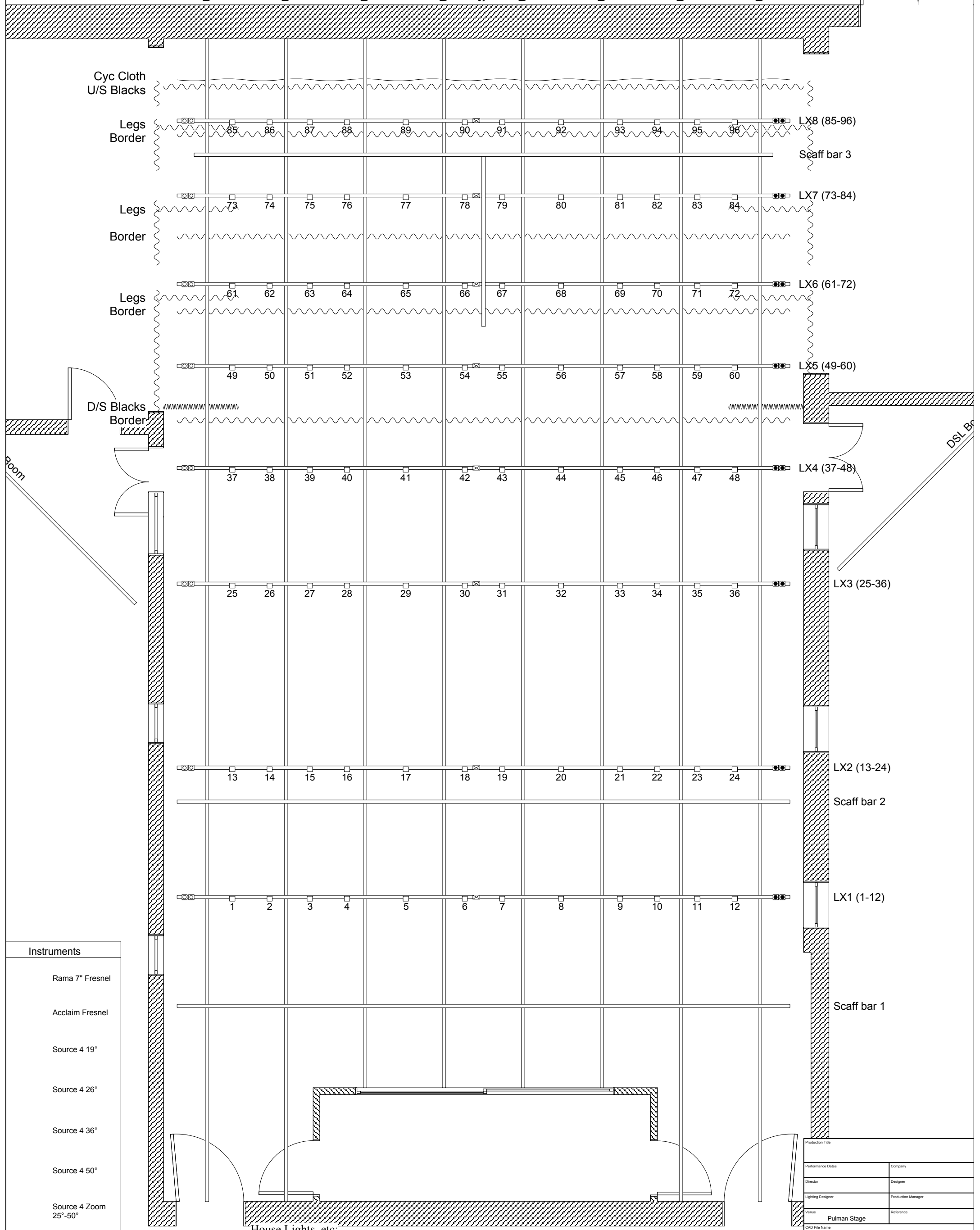


M5 4 3 2 1 0 1 2 3 4 5 M

Up-Down 1 Up-Down 2 Up-Down 3 Up-Down 4 Scaff bar 4 Up-Down 5 Up-Down 6 Up-Down 7 Up-Down 8



Instruments	
Rama 7" Fresnel	
Acclaim Fresnel	
Source 4 19°	
Source 4 26°	
Source 4 36°	
Source 4 50°	
Source 4 Zoom 25°-50°	
Par16 'Birdie'	
Par64 (CP62)	
Lui Cyc Flood (4 way batten)	

House Lights, etc.  
 Ch. 301 - DMX 171 (Front)  
 Ch. 302 - DMX 172  
 Ch. 303 - DMX 173  
 Ch. 304 - DMX 174 (Back)  
 Ch. 305 - DMX 193 Aisle Lights  
 Ch. 311 - DMX 188  
 Ch. 312 - DMX 189  
 Ch. 313 - DMX 190  
 Aud. Left Entrance Lobby  
 Backstage Lobby  
 Cafe Corridor

Production Title	
Performance Dates	Company
Director	Designer
Lighting Designer	Production Manager
Venue	Reference
Pulman Stage	
CAD File Name	
Drawing Title	
Drawn By	Date
Drawn No.	Scale 1:25 @ A3
of	Grid Plan Drawn 18/11/2011 by DRT

